

SONY

Car Stereo Service Bulletin

Sony Service Company - Technical Services
A Division of Sony Corporation of America
Sony Drive, Park Ridge, New Jersey 07656

Model: GENERAL - CAR

No.178R1

Subject: Tracking Gain Adjustment Using
Lissajous Pattern

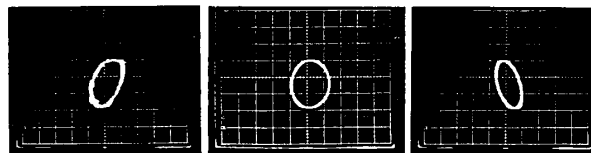
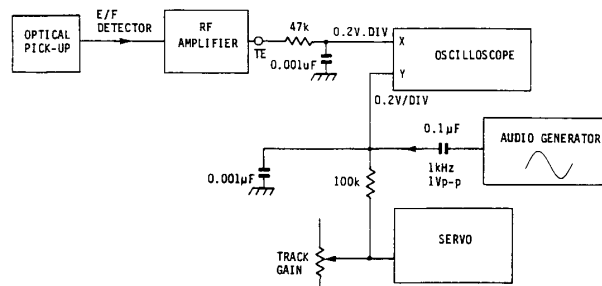
Date: February 8, 1991

This Service Bulletin Supersedes Service Bulletin No. 178

Symptom:
(**)

To correctly set the tracking gain control, please use the following procedure:

- Solution:**
- Perform set-up and connections as in drawing.
 - Set the scope to the X-Y mode and play a YEDS-18 disc.
 - Adjust the tracking gain control for an upright ellipse on the scope.



LOW GAIN

CORRECT

HIGH GAIN

Reference: A900866

PRINTED IN U.S.A.
CSA-14191-3

CSA-14 Compact Disc